



BIZTOP
AT SAYA SOUTH X

FULLY FURNISHED
STUDIO APARTMENTS

Iconic Design

The grand facade of Saya BizTop, with wide open landscaped hang out spaces and a 25-floor modern tower is an architectural marvel such that the location is destined to be referred with its name.

Unobstructed Visibility

Being right on the Noida-Greater Noida 130 m wide link road, the structure enjoys easy recognition and attention from miles away.

Smooth and Swift Access

Located at the junction of major roads and in vicinity of the proposed metro station, this highstreet is a sureshot winner.



An Unmatched Neighborhood

CATCHMENT OF OVER 5 LAKH FAMILIES WITHIN 6 KM

⌚ 5 MINUTES

- NH 24
- SECTOR-120, NOIDA
- WISDOM TREE SCHOOL
- RYAN INTERNATIONAL SCHOOL
- CROSSING REPUBLIC RESIDENTIAL DEVELOPMENT

⌚ 5-10 MINUTES

- DPS, LOTUS VALLEY SCHOOL, GD GOENKA
- NOIDA-GR.NOIDA EXPRESSWAY
- FORTIS HOSPITAL
- SAI TEMPLE SECTOR 52
- SHIV NADAR UNIVERSITY
- MAX SUPER SPECIALTY HOSPITAL
- NOIDA CITY CENTER METRO STATION

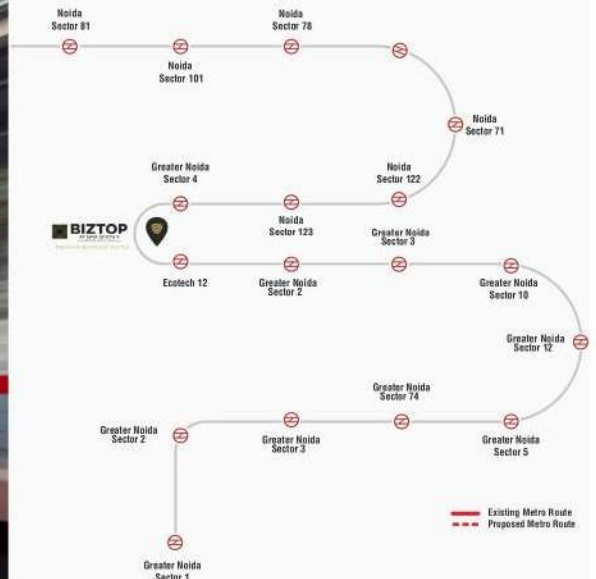
Located in Greater Noida (West)

3-side open plot right at the Ek Murti Chowk roundabout, facing 130 m Noida & Greater Noida West Link Road.





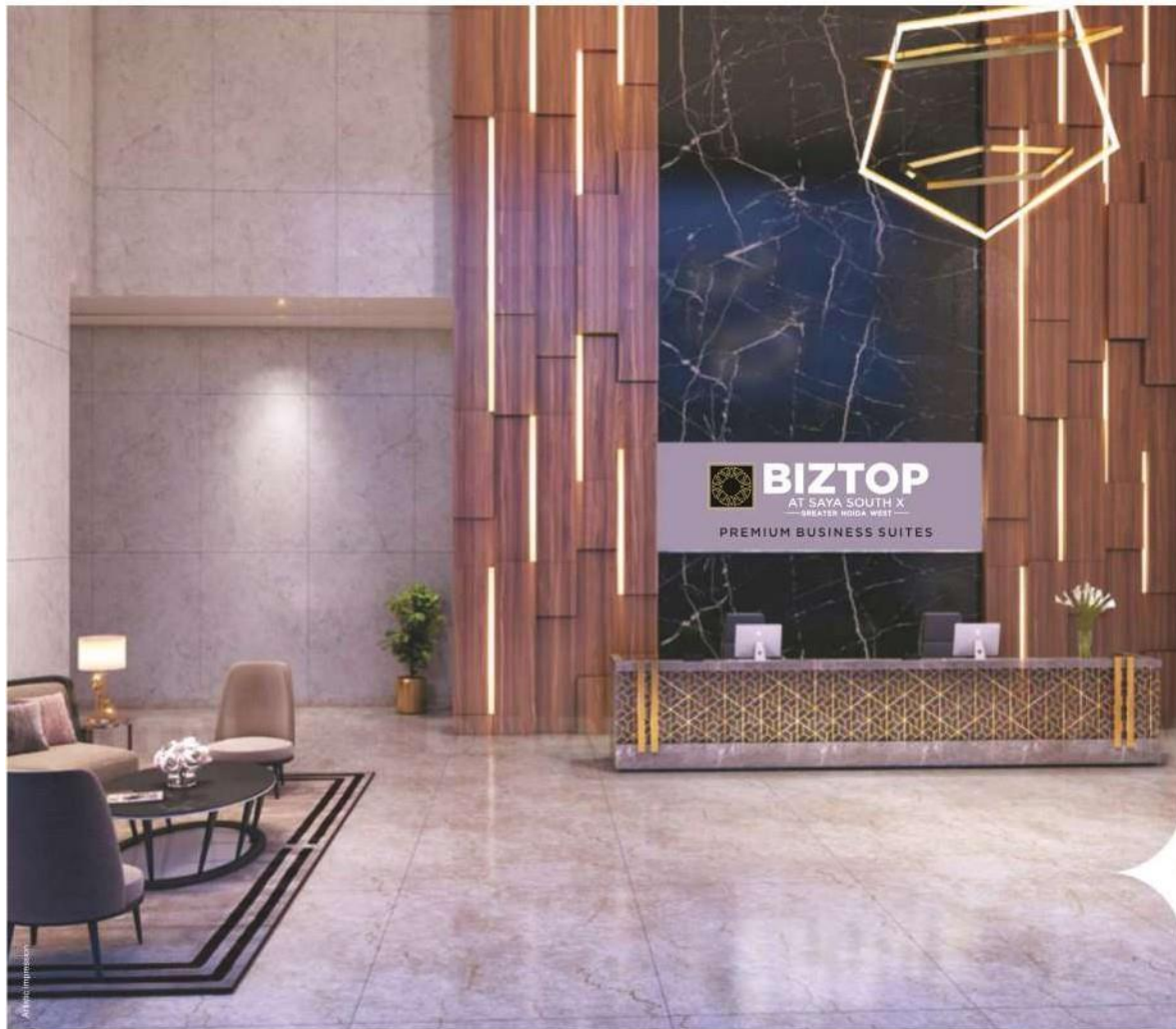
Stay Connected





Elevating from
the First Sight





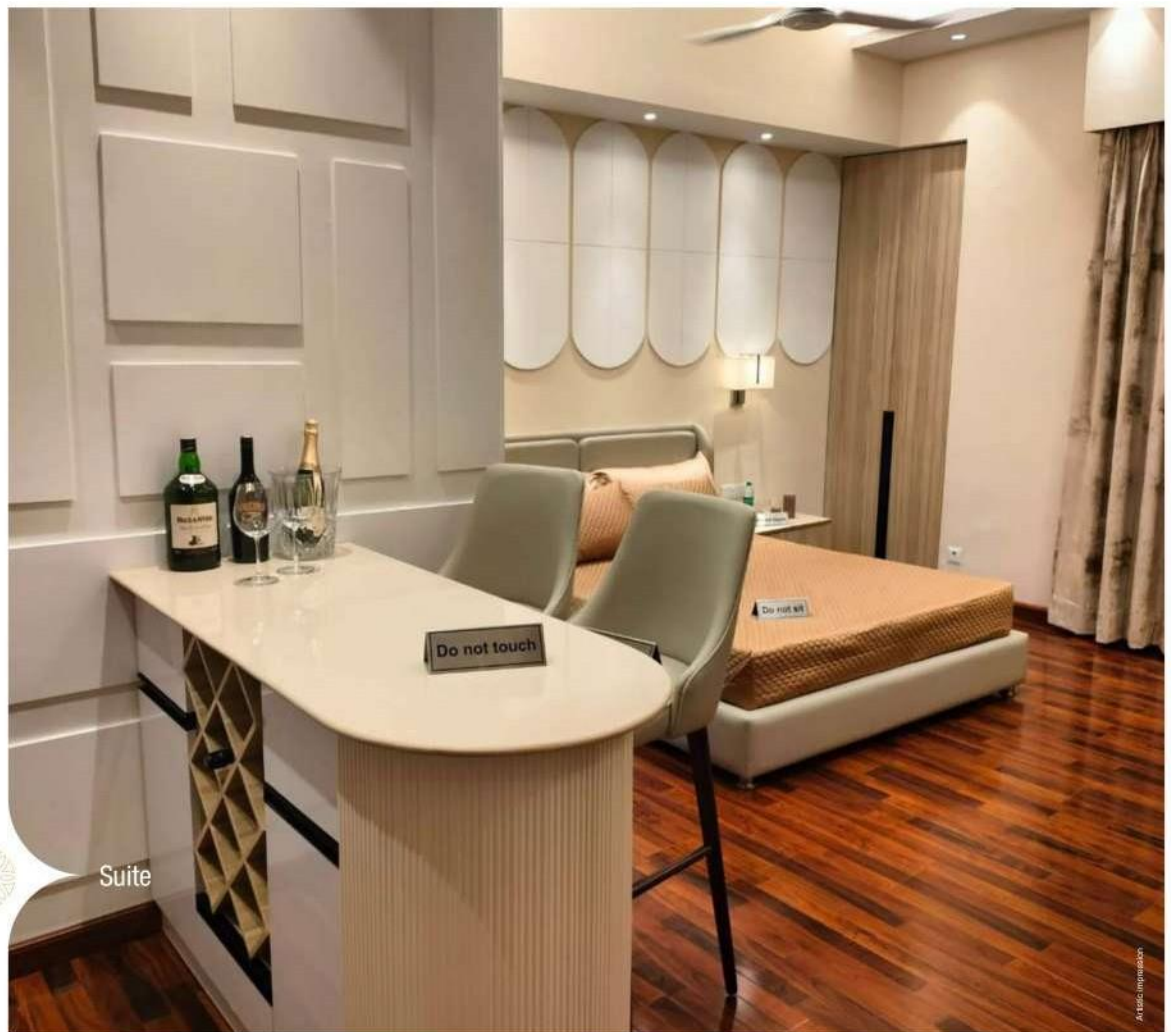
Enter a Refreshing Address

The gleaming double-height lobby is a welcome sight for both employees and visitors, leading into a well-lit concourse that features ample seating amidst modern interior studded with natural tones and plants. A cosy café serves quick relishes for those waiting, besides serving as a great place for a casual chat over a bite.



A World of Peaceful, Laid-back Living

An infrastructure to provide the best lifestyle in an exotic ambience is what BizTop serviced apartments offer to the elite corporate class. Studded with super luxury amenities and facilities, these fully furnished service apartments feature single rooms with modular kitchen and bathroom setups.





View of Suite

The interior is magnificently decorated with vibrant paint, exclusive fixtures and holdings to provide a majestic life that people aspire to experience in their private spaces. Located in the heart of Greater Noida West, these heavenly abodes feature excellent communication facilities with Delhi and NCR. Ideally designed for working professionals and business travellers.



View of Suite

The architectural vision behind SAYA BizTop was not only to provide a structure but also to provide the lush, agile and novel workplace culture.





Dive into Pure
Indulgence

All-day Dining
Restaurant



Soak in the
Ambience



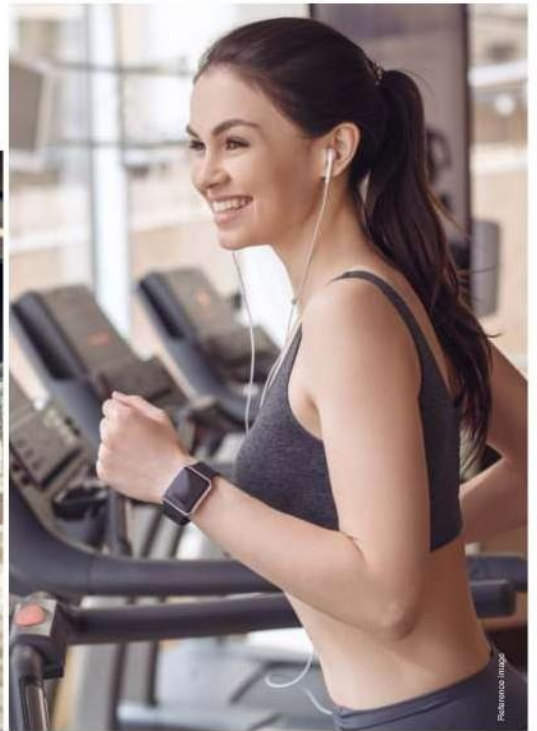
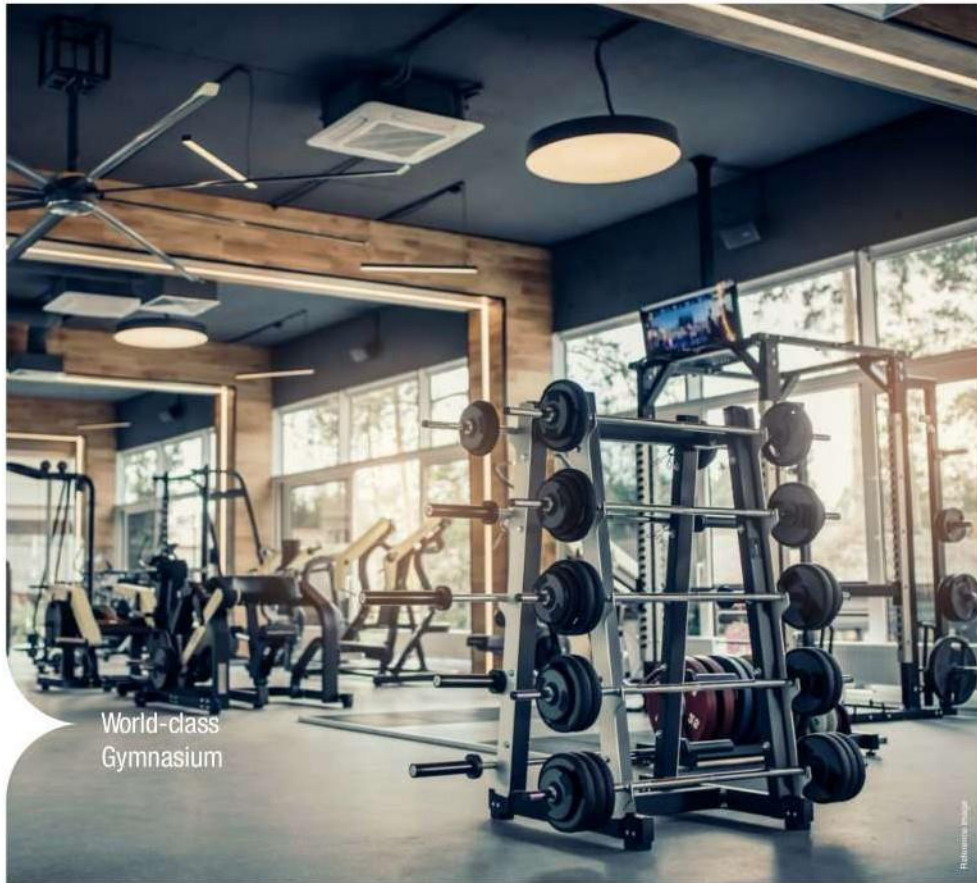
Bar & Lounge





Slip Into
Convenience

A Splash of
Health



Slip Into
Convenience

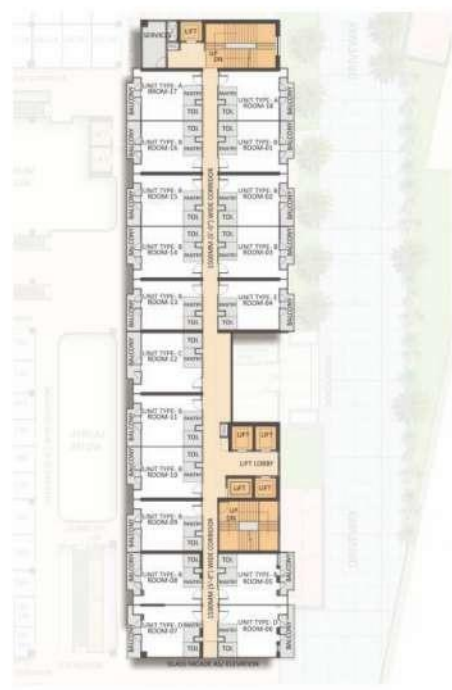


Covered
Car Parking

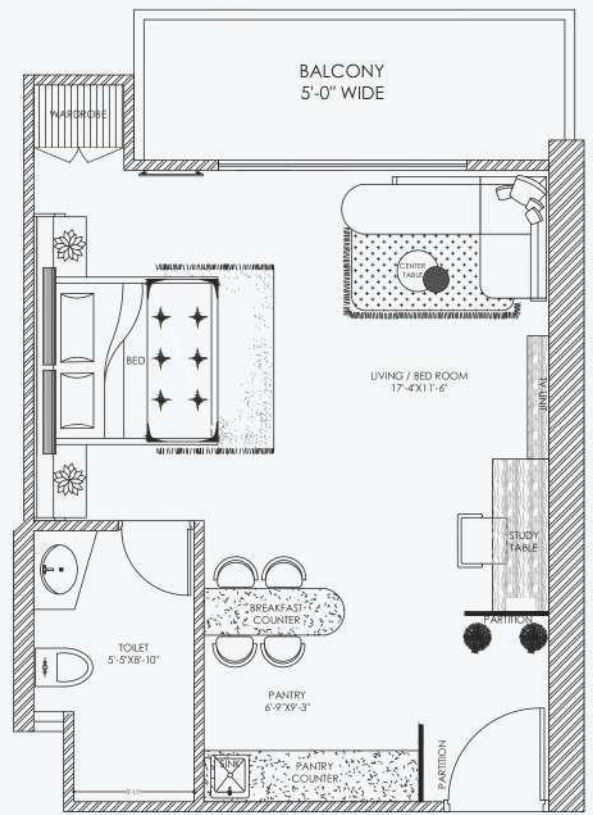
Floor Plan



REFUGE FLOORS
11TH, 16TH & 25TH



FLOORS
7TH-10TH, 12TH-17TH & 19TH-24TH



TYPICAL UNIT PLAN
BUSINESS SUITES

PROPOSED SPECIFICATIONS

DETAILS OF HUB	
Total No. Of Units	336 Nos.
7-10th Floor, 12-17th Floor & 19-24 Floor	Eighteen to a core
11th, 18th & 25 Refuge Floor	Sixteen to a core
Ceiling Height	3600mm (H) floor to floor
LIFT AND ESCALATORS	
Lifts	4 (passenger) +1 (Service)
Specification of lifts.	SS finish from inside & outside
ENTRANCE LOBBY & COMMON AREA	
Air-Conditioned (Ground Floor Lobby Area Only)	
Flooring	Granite /Marbled tile
Ceiling	Metal Grid Ceiling
Paint	ORR
Walls	Plastered walls with Paint
Electricty	Common area and corridor lighting
Fire Fighting	As per fire NOC
Staircase flooring	Granite/ Tile
Lighting	Tube Light /Ceiling Mounted LED Light Fixture
BASEMENT AREA	
Road and Parking	VDF Trimix Concrete Flooring
Lighting	Tube Light / Ceiling Mounted LED Light Fixture
Ramp	Chequered Tiles/ Trimix Concrete flooring
Fire Fighting	As per norms
SERVICES	
DC set	As per load requirement
STP	As per load requirement
PRESIDENTIAL CLUB AMENITIES (ON PAID BASIS)	
Club Area	16000 sq.ft. (approx) **
Gymnasium Area	Approx - 1800 sq.ft.
Equipments	Treadmill, leg press, Cross trainer, Chest press, Bench, Weight plates, Dumbe (all equipments will be equipped as per the space) .
Wall	Split AC as per required capacity . Wall paper/ wooden panelling/ texture paint/ Acrylic emulsion paint (Make - Asian /ICI Dulux / Berger or equivalent)
Flooring	Rubberized /PVC Flooring
Ceiling	Gypsum/ POP False ceiling
Doors/Window	Wooden with Glass door
Exquisite year-round Swimming Pool	All weather adult pool with deck aprox area 1700 sq.ft. and 4ft depth, Pool Size - 37 ft. X 20ft. (approx).
Indoor Games	Snooker/ Billiards Room

FLOORING
Laminated wooden flooring in room and pantry area
WALLS
Designer walls with acrylic emulsion paint / texture paint / laminated finish .
CEILING
Cobe as per design, Acrylic emulsion plastic paint
WARDROBE
Laminated modular wardrobe with soft close fittings
PANTRY / KITCHENETTE
Dry Pantry Platform With Single Bowl Sink On Granite Countertop 600mm DADO Above Working Top Wood Work Below The Working Top With Fittings Designer Bar cum Breakfast counter .
TOILET
Ceramic tiles (300x300mm) flooring . Ceramic tiles (300x450mm) on walls up to 2400 height Sanitary wear with counter top basin, CP fittings and mirror and half glass partition in shower area.
DOORS AND WINDOWS
UPVC Outer door and window Main Entry door frame made of Marandi or equivalent wood with laminated door shutter Internal door frame made of Marandi or equivalent wood with laminated door shutter Good Quality hardware fittings 2 Door Closer (1 in a Bathroom)
ELECTRICAL
Copper wire in PVC conduit with MCB supported circuit and adequate power and light point LED Light
TELEPHONE
Intercom Facilities with telephone equipment
OTHER ITEMS
One double bed with mattress (6" thick)and side table One study table (600X1200mm) with chair 3-4 seater sofa with one center table One 32" television with T.V unit One ceiling fan One individual RO Towel rack in bathroom One split air conditioner (1.5 tonne) One Geyser (25 litres) One Induction Plate One refrigerator (45 litres) Microwave Dustbin in toilet Hangers in Wardrobe One Light in balcony Gdgrej smart RFID lock

Saya Studio Apartments



SAYA **Saya South X Studio Apartments**
3 Side open plot at the ek murti chowk roundabout , facing 130 m
Noida & Greater Noida West link road .

INDUMAA

9599132209 www.indumaa.com

Click here : <https://youtu.be/WyuE3hBdnLQ>



**Forever Infrabuild
India LLP**

Corporate Office:

Plot No. C-3A, Sector 129,
J. P. Wish Town,
Noida, Uttar Pradesh 201 306

Site Office

Plot No. C-OI, Sector Ecotech-12
Greater Noida - 201306
Distt. Gautam Budh Nagar, U.P.

Registered Office

B-7145, 2nd Floor, Safdarjung Enclave
Extension, New Delhi - 110029
T : 120-6936100/01 | E info@sayahomes.in

Rera Registration No: UPRERAPRJ17950 | www.up-rera.in

Disclaimer: The elevations, designs, plans and dimensions are as per current sanctioned approvals and plans, specifications, amenities and facilities will be set out in the agreements for sale and images are artistic impressions and purely for representational purposes. The same may be subject to alterations/changes/revisions in terms of directions, approvals, orders and/or regulations of the concerned/relevant authorities, and/or for compliance with laws/regulations in force from time to time. In view of the above, and in line with our customer policies, we may change/alter the above in consonance with approvals, orders, directions, applicable laws, regulations, etc. Unless otherwise stated, all the images, visuals, materials and information contained herein are purely artistic/ creative concepts and may not be actual representations of the product and/or any amenities. None of the above may be construed to form any basis of or serve as an inducement or invitation for payment of any advance and/or deposit, to be made by a prospective customer, under relevant provisions of law or otherwise. Solely the amenities/ specifications, features mentioned in the agreement for sale (if any) shall be final. For more information refer to <http://www.up-rera.in/>